

This manual contains copyright material. Reproduced with permission of Miller Tilt-Top Trailer Inc.

DEPARTMENT OF THE ARMY TECHNICAL MANUAL

**ORGANIZATIONAL, DIRECT SUPPORT AND GENERAL
SUPPORT MAINTENANCE REPAIR PARTS**

FOR

TRAILER, FLAT BED, TILT LOADING, 5 TON, 4 WHEEL

XM789

**Headquarters, Department of the Army, Washington, D. C.
29 December 1969**

	Page
SECTION I. INTRODUCTION	
II. PRESCRIBED LOAD ALLOWANCES	
III. ORGANIZATIONAL REPAIR PARTS LIST	
GROUP 06 - ELECTRICAL SYSTEM	
0609 - Light	9
0613 - Chassis wiring.....	9
Group 12 - Brakes	
1201 - Parking brake lever and cable assembly	10
1202 - Brake assembly	10
Group 13 - Wheel and Tires	
1311 - Wheel assembly.....	10
1313 - Tires and tubes	12
Group 16 - Springs and Shock Absorbers	
1601 - Springs	12
Group 18 - Frame	
1812 - Trailer attaching parts	13
GROUP 22 - BODY, CHASSIS AND ACCESSORY ITEMS	
2202 - Accessory items.....	13
Group 24 - Hydraulic Lift Components	
2404 - Hydraulic tilt cylinder	13
IV. DIRECT AND GENERAL SUPPORT REPAIR PARTS LIST	
Group 06 - Electrical System	
0609 - Lights	14
0613 - Chassis wiring	14

	Page
Group 11 - Axles	
1100 - Front and rear axles.....	15
Group 12 - Brakes	
1201 - Parking brake lever and cable assembly	15
1202 - Brake assembly.....	15
Group 13 - Wheels and Tires	
1311 - Wheel assembly.....	16
1313 - Tires and tubes	17
Group 16 - Spring and Shock Absorbers	
1601 - Springs.....	17
Group 18 - Frame	
1812 - Trailer attaching parts.....	18
Group 22 - Body, Chassis and Accessory Items	
2202 - Accessory items.....	18
Group 24 - Hydraulic Lift Components	
2404 - Hydraulic tilt cylinder.....	18

ORGANIZATIONAL, DIRECT SUPPORT, AND GENERAL SUPPORT REPAIR PARTS LIST

1. **Scope.** This manual lists repair parts required for the performance of organizational, direct support, and general support maintenance of the Trailer, Flat Bed, Tilt Loading, 5 Ton, 4 Wheel, XM789.

2. **General.** This Repair Parts List is divided into the following sections:

a. Prescribed Load Allowance (PLA) - Section II. A composite listing of repair parts having quantitative allowances for initial stockage at the organizational level.

b. Organizational Repair Parts List - Section III. A list of repair parts authorized for the performance of maintenance at the organizational support level in figure and item number sequence.

c. Direct and General Support Repair Parts List - Section IV. A list of repair parts authorized for performance of maintenance at the direct and general support level in figure and item number sequence.

d. Federal Stock Number and Reference Number Index - Section V. A list of Federal Stock Numbers in ascending numerical sequence, followed by a list of reference numbers appearing in all the listings, in ascending alpha-numeric sequence, cross-referenced to the illustration figure number and item number.

3. **Explanation of Columns.** The following provides an explanation of columns in the tabular lists in Section II through IV:

a. Source, Maintenance, and Recoverability Codes (SMR), Column 1, Section III and IV.

(1) Source code, indicates the selection status and source for the listed item. Source codes used are:

Code	Explanation
P	Applied to repair parts which are stocked in or supplied from the GSA/DSA, or Army supply system, and authorized for use at indicated maintenance categories.
X1	Applied to repair parts which are not procured or stocked, the requirement for which will be supplied by use of next higher assembly or component.

(2) Maintenance code, indicates the lowest category of maintenance authorized to install the listed item. The maintenance level codes are:

Code	Explanation
O	Organizational category of maintenance
F	Direct support category of maintenance

(3) Recoverability code, indicates whether unserviceable items should be returned for recovery or salvage. Items not coded are expendable.

b. Federal Stock Number, Column 1 in Section II, Column 2 in Section III and IV. This column indicates the Federal Stock Number assigned to the item and will be used for requisitioning purposes.

c. Description, Column 2 in Section II, Column 3 in Section III and IV. This column indicates the Federal item name and any additional description of the item required. The abbreviation "w/e", when used as a part of the nomenclature, indicates the Federal Stock Number includes all armament, equipment, accessories, and repair parts issued with the item. A part number or other reference number is followed by the applicable five-digit Federal supply code for manufacturers in parentheses. Repair parts quantities included in the kits, sets, and assemblies are shown in front of the repair part name.

d. Unit of Measure (U/M), Column 4 of Section III and IV. A 2-character alphabetic abbreviation indicating the amount of quantity of the item upon which the allowances are based, e.g., ft., ea, pr, etc.

e. Quantity Incorporated in Unit, Column 5 of Section III and IV. This column indicates the quantity of the item used in the assembly. A "∞" appearing in this column in lieu of a quantity indicates that a definite quantity cannot be indicated (e.g., shims, spacers, etc.).

f. 15-Day Organizational Maintenance Allowance, Column 3 of Section II and Column 6 of Section III.

(1) The allowance columns are divided into four subcolumns. Indicated in each subcolumn opposite the first appearance of each item is the total quantity of items authorized for the number of equipments supported. Subsequent appearances of the same item will have the letter "REF" in the allowance columns. Items authorized for use as required but not for initial stockage are identified with an asterisk in the allowance column.

(2) The quantitative allowances for organizational level of maintenance represents one initial prescribed load for a 15-day period for the number of equipments supported. Units and organizations authorized additional prescribed loads will multiply the number of prescribed loads authorized by the quantity of repair parts reflected in the density column applicable to the number of items supported to obtain the total quantity of repair parts authorized.

(3) Organizational units providing maintenance for more than 100 of these equipments shall determine the total quantity of parts required by converting the equipment quantity to a decimal factor by placing a decimal point before the next to last digit of the number to indicate hundredths, and multiplying the decimal factor by the parts quantity authorized in the 51-100 allowance column.

Example, authorized allowance

for 51-100 equipments is 40; for 150 equipments multiply 40 by 1.50 or 60 parts required.

(4) Subsequent changes to allowances will be limited as follows: No change in the range of items is authorized. If additional items are considered necessary, recommendation should be forwarded to Commanding General, Headquarters, US Army Tank-Automotive Command, ATTN: AMSTA-M, Warren, Michigan 48090, for exception or revision to the allowance list. Revisions to the range of items authorized will be made by the above based upon engineering experience, demand data, or TAERS information

g. 30-Day DS/GS Maintenance Allowances, Column 6 and 7, of Section IV.

(1) The allowance columns are divided into three subcolumns. Indicated in each subcolumn, opposite the first appearance of each item, is the total quantity of items authorized for the number of equipments supported. Subsequent appearances of the same item will have the letters "REF" in the applicable allowance columns. Items authorized for use as required but not for initial stockage are identified with an asterisk in the allowance column.

(2) The quantitative allowances for DS/GS levels of maintenance will represent initial stockage for a 30-day period for the number of equipments supported.

(3) Determination of the total quantity of parts required for maintenance of more than 100 of these equipments can be accomplished by converting the equipment quantity to a decimal factor by placing a decimal point before the next to last digit of the number to indicate hundredths, and multiplying the decimal factor by the parts quantity authorized in the 51-100 allowance column. Example, authorized allowance for 51-100 equipments is 40; for 150 equipments multiply 40 by 1.50 or 60 parts required.

h. 1-Year Allowances Per 100 Equipments/Contingency Planning Purposes, Column 8 of Section IV. This column indicates opposite the first appearance of each item the total quantity required for distribution and contingency planning purposes. The range of items indicates total quantities of all authorized items required to provide for adequate support of 100 equipments for one year.

i. Illustration, Column 7 of Section III and Column 9 of Section IV. This column is divided as follows:

(1) **Figure Number, Subcolumn a.** Indicates the figure number of the illustration in which the item is shown.

(2) **Item Number, Subcolumn b.** indicates the callout number used to reference the item in the illustration.

4. How to Locate Repair Parts.

a. When Federal Stock Number or reference number is unknown:

- (1) **First.** Using the table of contents, determine the functional subgroup within which the repair part belongs.

This is necessary since illustrations are prepared for functional subgroups and the listings are divided into the same groups. In some cases several illustrations were necessary to illustrate a functional subgroup. In these cases the subgroup has been divided into assembly groups.

- (2) **Second.** Find the illustration covering the functional subgroup or assembly to which the repair part belongs.

- (3) **Third.** Identify the repair part on the illustration and note the illustration figure and item number of the repair part.

- (4) **Fourth.** Using the Repair Parts Listing, find the functional subgroup or assembly to which the repair part belongs and locate the illustration figure and item number noted on the illustration.

b. When Federal Stock Number or reference number is known:

- (1) **First.** Using the Index of Federal Stock Numbers and Reference Numbers, find the pertinent Federal Stock

Number or reference number. This index is in ascending FSN sequence followed by a list of reference numbers in alphanumeric sequence, cross-referenced to the illustration figure number and item number.

- (2) **Second.** Using the Repair Parts Listing, find the functional subgroup of the repair part and the illustration

figure number and item number referenced in the Index of Federal Stock Numbers and Reference Numbers.

5. Federal Supply Codes for Manufacturers.

Code	Manufacturer
(96906)	Military Standard
(23379)	Miller Trailer, Inc.

6. Recommendations for Maintenance Publication Improvements. Report of errors, omissions, and

recommendations for improving this publication by the individual user is encouraged. Reports (recommended changes to Publications) submitted on DA Form 2028 and forwarded direct to Commanding General, HQ, US Army Tank-Automotive Command, ATTN: AMSTA-M(NMP). Warren, Michigan 48090.

SECTION II

PRESCRIBED LOAD ALLOWANCE (MIL-M-63001 B)					
(1) FEDERAL STOCK NUMBER	(2) DESCRIPTION	(3) 15-DAY ORGANIZATIONAL MAINTENANCE ALLOWANCE			
		(a) 1-5	(b) 6-20	(c) 21-50	(d) 51-100
	GROUP 06 - ELECTRICAL SYSTEM				
	0609 - LIGHTS				
6240-019-0877	LAMP, INCANDESCENT: MS15570-1251 (96906)	1	1	2	4
6240-044-6914	LAMP, INCANDESCENT: MS35478-1683 (96906)	1	1	2	4
	0613 - CHASSIS WIRING HARNESS				
2590-772-8813	HARNESS ASSY: Intervehicular - 7728813	1	1	1	1
	GROUP 12 - BRAKES				
	1202 - BRAKE ASSEMBLY				
2530-782-4276	PARTS KIT, MAGNET: Right hand - 56222 (23379)	1	1	2	4
2530-782-4277	PARTS KIT, MAGNET: Left Hand - 56227 (23379)	1	1	2	4
2530-782-4312	PARTS KIT, BRAKE SPRINGS - 56214 (23379)	1	1	2	4
2530-782-4313	BRAKE SHOE SET: Internally actuated - 56210 (23379)	1	1	2	4
3120-880-3066	BEARING, SLEEVE: 42680 (23379)	1	1	1	1
	GROUP 13 - WHEELS AND TIRES				
	1311 - WHEEL ASSEMBLY				
2530-782-4315	PACKING PREFORMED: Grease retaining - 10217 (23379)	*	1	2	3
3110-100-0544	CUP: Tapered roller - 10219 (23379)	1	2	4	6
3110-100-3541	CONE AND ROLLERS: Tapered - 10218 (23379)	1	2	4	6
	1313 - TIRES AND TUBES				
2640-052-0944	CAP: Tire valve - MS51375-1 (96906)	2	3	5	9
	GROUP 16 - SPRINGS AND SHOCK ABSORBERS				
	1601 - SPRINGS				
2510-782-4294	SPRING ASSY: Leaf - 10234 (23379)	*	1	1	2
5306-880-9709	"U"-BOLT: Pivot - 10238 (23379)	*	1	2	3

SECTION III

REPAIR PARTS FOR ORGANIZATIONAL MAINTENANCE (MIL-M-63001 B)										
(1) SMR CODE	(2) FEDERAL STOCK NUMBER	(3) DESCRIPTION	(4) UNIT OF MEAS	(5) QTY INC IN UNIT	(6) 15-DAY ORG MAINT ALLOWANCE				(7) ILLUSTRATION	
					(a)	(b)	(c)	(d)	(a)	(b)
					1-5	6-20	21-50	51-100	FIGURE NO.	ITEM NO.
GROUP 06 - ELECTRICAL SYSTEM										
0609- LIGHTS (Fig. 1)										
P O	6220-577-3434	LIGHT: clearance, service, amber - MS35423-1 (96906)	ea	2	*	*	*	*	1	1
P O	6220-726-1916	LIGHT: clearance, service, red - MS35423-2 (96906)	ea	2	*	*	*	*	1	2
P O	6220-577-3435	LIGHT: clearance, blackout, amber - MS35424-1 (96906)	ea	2	*	*	*	*	1	3
P O	6220-727-3288	LIGHT: clearance, blackout, red - MS35424-2 (96906)	ea	2	*	*	*	*	1	4
P O	5305-984-6210	SCREW: 8-32 x 3/8, lg, hex (slot), washer face - 10611 (23379)	ea	32	*	*	*	*	1	5
P O	6220-669-5623	LIGHT: service stop, service tail, blackout tail - MS51329-1 (96906)	ea	2	*	*	*	*	1	6
P O	5306-045-1976	CAPSCREW: w/lockwasher, 3/8-16NC x 3/4 lg - 10612 (23379)	ea	4	*	*	*	*	1	7
P O	6220-846-9745	STOPLIGHT: vehicular, blackout - MS51302-1 (96906)	ea	1	*	*	*	*	1	8
P O	2590-782-4257	PIN: stabilizing, electrical light system - 10613 (23379)	ea	1	*	*	*	*	1	9
P O	5306-880-9784	CAPSCREW: 5/16-24NF x 3/4 lg, w/lockwasher - 10614 (23379)	ea	1	*	*	*	*	1	10
		CONNECTOR: receptacle, w/gasket - MS75021 (96906)	ea	1					1	14
P O	6240-019-0877	LAMP, INCANDESCENT: MS15570-1251 (96906) (Non-illustrated)	ea	2	1	1	2	4		
P O	6240-044-6914	LAMP, INCANDESCENT: MS35478-1683 (96906) (Non-illustrated)	ea	2	1	1	2	4		
0613 - CHASSIS WIRING (Fig. 1)										
P O	2590-782-4262	COVER: receptacle, Bendix - 10616 (96906)	ea	1	*	*	*	*	1	15
P O	2590-782-4261	COVER ASSY: front corners (screws & gaskets) - 10617 (23379)	ea	2	*	*	*	*	1	16
P O	2590-782-4260	COVER ASSY: main (screw & gasket) - 10618 (23379)	ea	1	*	*	*	*	1	17
P O	2590-782-4259	COVER ASSY: brake (screw & gasket) - 10619 (23379)	ea	1	*	*	*	*	1	18
P O	2590-782-4258	CONNECTOR ASSY: shells, sleeve & washer 10620 (23379)	ea	4	*	*	*	*	1	19
P O	2590-772-8813	HARNESS ASSY: intervehicular - 7728813 (Non-illustrated)	ea	1	1	1	1	1		

SECTION III - Continued

REPAIR PARTS FOR ORGANIZATIONAL MAINTENANCE (MIL-M-63001 B)										
(1) SMR CODE	(2) FEDERAL STOCK NUMBER	(3) DESCRIPTION	(4) UNIT OF MEAS	(5) QTY INC IN UNIT	(6) 15-DAY ORG MAINT ALLOWANCE				(7) ILLUSTRATION	
					(a)	(b)	(c)	(d)	(a)	(b)
					1-5	6-20	21-50	51-100	FIGURE NO.	ITEM NO.
		GROUP 12- BRAKES								
		1201 - PARKING BRAKE LEVER AND CABLE ASSEMBLY (FIG. 2)								
P O	2530-782-4269	LEVER: manual control, hand brake - 10600 (23379)	ea	1	*	*	*	*	2	1
		PIN: w/flatwasher and cotter key - 10604 (23379)	ea	1	*	*	*	*	2	2
P O	2530-782-4283	SPACER: sleeve, brake cable - 10607 (23379)	ea	2	*	*	*	*	2	3
P O	5305-880-9772	CAPSCREW ASSY: 5/16-18NC x 1-5/8, w/nut & lockwasher - 10603 (23379)	ea	3	*	*	*	*	2	4
P O	2530-169-5786	PIN: w/cotter key - 10608 (23379)	ea	2	*	*	*	*	2	5
P O	2530-782-4266	CABLE ASSY: left hand brake - 10602 (23379)	ea	1	*	*	*	*	2	6
P O	2530-782-4268	CABLE ASSY: right hand brake - 10601 (23379)	ea	1	*	*	*	*	2	7
P O	2530-782-4282	CLAP: brake cable - 10606 (23379)	ea	2	*	*	*	*	2	8
P O	2530-782-4271	SPACER: sleeve, brake system - 10605 (23379)	ea	1	*	*	*	*	2	9
		1202 - BRAKE ASSEMBLY (FIG. 3)								
P O	2530-782-4312	PARTS KIT: brake springs - 56214 (23379) COMPOSED OF: 2 - 44934 adjusting screw spring 4 - 45424 retractor spring	ea	1	*	1	1	2	3	1
P O	2530-782-4320	PLATE: shoe guide, brake system - 46424 (23379)	ea	1	*	*	*	*	3	2
X1 O		PLATE: backing, and anchor assy - r. h. 48754 (23379)	ea	1					3	3
X1 O		PLATE: backing, and anchor assy - l. h. 48755 (23379)	ea	1					3	4
	5935-782-8661	CONNECTOR ASSY: magnet lead - 48770 (23379)	ea	1		*	*	*	3	5
P O	3120-880-3066	BEARING: sleeve, oilite- 42680 (23379)	ea	1	1	1	1	1	3	6
P O	2530-782-4284	COVER: broke adjusting slot - 58921 (23379)	ea	1	*	*	*	*	3	7
P O	2530-782-4277	PARTS KIT: magnet, l. h. - 56277 (23379) COMPOSED OF 1 - 48762 magnet 1 - 43747 retaining ring 1 - 46264 spring 2 - 49789 adaptor	ea	1	*	1	1	2	3	8

SECTION III - Continued

REPAIR PARTS FOR ORGANIZATIONAL MAINTENANCE (MIL-M-63001 B)										
(1) SMR CODE	(2) FEDERAL STOCK NUMBER	(3) DESCRIPTION	(4) UNIT OF MEAS	(5) QTY INC IN UNIT	(6) 15-DAY ORG MAINT ALLOWANCE				(7) ILLUSTRATION	
					(a)	(b)	(c)	(d)	(a)	(b)
					1-5	6-20	21-50	51-100	FIGURE NO.	ITEM NO.
		1202 - BRAKE ASSEMBLY (FIG. 3) - Continued								
P O	2530-782-4276	PARTS KIT: magnet, r. h. - 56222 (23379) COMPOSED OF: 1 - 48763 magnet 1 - 43747 retaining ring 1 - 46264 spring 1 - 49789 adaptor	ea	1	*	1	1	2	3	9
P O	2530-782-4313	BRAKE SHOE SET: internally actuated - 56210 (23379) COMPOSED OF: 1 - 46397 shoe & lining primary 1 - 46398 shoe & lining secondary	ea	2	1	1	2	4	3	10
P O	5305-880-9747	SCREW ASSY: adjusting, brake - 58929 (23379)	ea	1	*	*	*	*	3	11
P O	2530-782-4286	ACCESSORY KIT: broke shoe - 56266 (23379) COMPOSED OF: 2 - 30687 pin 2 - 30688 spring 4 - 30690 cup	ea	1	*	1	1	2	3	
P O	2530-782-4279	ACTUATING ASSY: magnet and lever, l. h., 12 volt (green loom) - 48761 (23379)	ea	1	*	*	*	*	3	13
P O	2530-782-4278	ACTUATING ASSY: magnet and lever, r. h., 12 volt (green loom) - 48760 (23379)	ea	1	*	*	*	*	3	14
P O	2530-782-4273	CLAMP: wire - 30847 (23379)	ea	1	*	**	*	*	3	15
P O	2590-169-5728	PLATE: armature - 30944 (23379) (Non-illustrated)	ea	1	*	*	*	*		
P O	2530-782-4267	BRAKE ASSY: r. h., 12 volt - 48960 (23379) (Non-illustrated)	ea	1	*	*	*	*		
P O	2530-782-4285	BRAKE ASSY: l. h., 12 volt - 48961 (23379) (Non-illustrated)	ea	1	*	*	*	*		
		GROUP 13 - WHEELS AND TIRES								
		1311 - WHEELS (FIG. 4)								
P O	5307-017-0534	STUD: wheel, component of wheel assy - 10632 (23379)	ea	24	*	*	*	*	4	
P O	5310-017-0512	WASHER: stud wheel, component of wheel assy - 10628 (23379)	ea	24	*	*	*	*	4	15
P O	5315-234-1664	PIN, COTTER: 3/16 x 1-1/2 in. wheel assy 10636 (23379) MS24665 (96906)	ea	4	*	*	*	*	4	16
P O	2530-782-4314	CAP: grease, wheel, part of wheel assy 10637 (23379)	ea	4	*	*	*	*	4	17
P O	5310-017-0508	NUT: slotted, hexagon, spindle, part of wheel assy - 10247 (23379)	ea	4	*	*	*	*	4	18
P O	5310-017-0511	WASHER: spindle, wheel, part of wheel assy - 10635 (23379)	ea	4	*	*	*	*	4	19

SECTION III - Continued

REPAIR PARTS FOR ORGANIZATIONAL MAINTENANCE (MIL-M-63001 B)										
(1) SMR CODE	(2) FEDERAL STOCK NUMBER	(3) DESCRIPTION	(4) UNIT OF MEAS	(5) QTY INC IN UNIT	(6) 15-DAY ORG MAINT ALLOWANCE				(7) ILLUSTRATION	
					(a)	(b)	(c)	(d)	(a)	(b)
					1-5	6-20	21-50	51-100	FIGURE NO.	ITEM NO.
		1311 - WHEELS (FIG. 4) - Continued								
P O	3110-100-3541	CONE AND ROLLERS: tapered roller bearing, wheel assy - 10218 (23379)	ea	8	*	1	1	1	4	20
P O	3110-100-0544	CUP tapered roller bearing, inner or outer, wheel assy - 10219 (23379)	ea	8	*	1	1	1	4	21
P O	2530-782-4316	LUG NUT: wheel - 10634 (23379)	ea	24	*	*	*	*	4	22
P O	2530-782-4319	WHEEL: pneumatic, tire - 10633 (23379)	ea	4	*	*	*	*	4	23
P O	2530-782-4318	DRUM: brake - 10630(23379)	ea	4	*	*	*	*	4	25
P O	2530-782-4315	PACKING: preformed, grease retaining, part of wheel assy - 10217 (23379)	ea	4	*	1	2	3	4	26
		1313 - TIRES AND TUBES (NON-ILLUSTRATED)								
P O	2640-052-0944	CAP, TIRE VALVE: MS51375-1 (96906)	ea	4	2	3	5	9		
P F	2610-294-4944	TIRE, PNEUMATIC MS35390-1 (96906)	ea	4						
		GROUP 16 - SPRINGS AND SHOCK ABSORBERS								
		1601 - SPRINGS (FIG. 4)								
P O	5315-234-1673	PIN: cotter, 5/16 x 3 - 10303 (23379)	ea	2	*	*	*	*	4	1
X1 O		HOUSING: pivot assembly - 10330 (23379)	ea	2					4	2
X1 O		CAPSCREW ASSY: 3/4 - 10NC x 2, pivot housing - 10243 (23379)	ea	8					4	3
P O	4730-013-8105	FITTING: grease - 10242 (23379)	ea	2	*	*	*	*	4	4
P O	5305-880-9763	CAPSCREW: w/lockwasher, 1/2 x 13NC x 7/8, h. t. pivot shaft - 10108 (23379)	ea	4	*	*	*	*	4	5
P O	2510-782-4295	SHAFT: pivot assembly - 10304 (23379)	ea	2	*	*	*	*	4	6
P O	5306-880-9709	U-BOLT: pivot, 3/4" - 10238 (23379)	ea	4	*	1	2	3	4	7
X1 O		SEAT: spring assy - 10239 (23379)	ea	4					4	8
P O	2510-782-4294	SPRING, ASSY: leaf - 10234 (23379)	ea	2	*	*	1	1	4	9
P O	2510-782-4296	CLIP: U-bolt, springs - 10237 (23379)	ea	4	*	*	*	*	4	10
P O	5310-019-3446	NUT: self-locking, U-bolt, 3/4-16NF 10236 (23379)	ea	8	*	*	*	*	4	11
P O	5310-017-0518	WASHER: bearing spring - 10232 (23379)	ea	16	*	*	*	*	4	12

SECTION III - Continued

REPAIR PARTS FOR ORGANIZATIONAL MAINTENANCE (MIL-M-63001 B)										
(1) SMR CODE	(2) FEDERAL STOCK NUMBER	(3) DESCRIPTION	(4) UNIT OF MEAS	(5) QTY INC IN UNIT	(6) 15-DAY ORG MAINT ALLOWANCE				(7) ILLUSTRATION	
					(a)	(b)	(c)	(d)	(a)	(b)
					1-5	6-20	21-50	51-100	FIGURE NO.	ITEM NO.
		GROUP 18 - FRAME								
		1812 - TRAILER ATTACHING PARTS (FIG. 5)								
P O	5306-880-9785	BOLT: 3/4-10NC x 5, hex head w/nut & washer - 10160 (23379)	ea	2	*	*	*	*	5	1
X1 O		CLEVIS ASSY: MHT - 10627 (23379)	ea	1					5	2
X1 O		HANDLE ASSY: 10177 (23379)	ea	1					5	3
P O	5315-298-1499	PIN: cotter, 1/8 x 2 - 10159 (23379)	ea	1	*	*	*	*	5	4
X1 O		FRAME: 10176 (23379)	ea	1					5	5
P O	2530-921-7308	PLATFORM LATCH ASSY: 10175 (23379)	ea	1	*	*	*	*	5	6
P O	2530-921-7306	STAND: long tongue - 10173 (23379)	ea	1	*	*	*	*	5	7
		GROUP 22 - BODY, CHASSIS AND ACCESSORY ITEMS								
		2202 -ACCESSORY ITEMS (FIG. 1)								
P O	9905-202-3639	REFLECTOR: indicating, clearance, amber-MS35387-2 (96906)	ea	2	*	*	*	*	1	11
P O	9905-202-2795	REFLECTOR: indicating, clearance, red-MS35387-1 (96906)	ea	4	*	*	*	*	1	12
		SCREW: 1/4-28NF x 3/8 lg, hex (slot), washer face - 10615 (23379)	ea	12					1	13
		GROUP 24 - HYDRAULIC LIFT COMPONENTS								
		2404 - HYDRAULIC TILT CYLINDER (FIG. 6)								
		BOLT: gland, 3/8-16NC x 1-1/4, w/nut	ea	2					6	2
P O	2590-782-4297	GLAND: hydraulic tilt cylinder - 10171 (23379)	ea	1	*	*	*	*	6	3
P O	2530-921-7239	PACKING: hydraulic tilt cylinder (included shaft dia. with order) 10168 (23379)	ea	1	*	*	*	*	6	4
		PLUG. filler, 1/4 NPT pipe - 10167 (23379)	ea	1					6	5
P O	5306-940-3238	BOLT: 1/2-13NC, 2-3/4 hex hd, w/2 nuts 10188 (23379)	ea	2	*	*	*	*	6	6
X1 O		BRACKET: shaft mounting - 10170 (23379)	ea	2					6	7
X1 O		BRACKET: shaft mounting, MHT - 10638 (23379)	ea	2					6	8

SECTION IV

REPAIR PARTS FOR DIRECT SUPPORT, GENERAL SUPPORT AND DEPOT MAINTENANCE
(MIL-M-63001 B)

(1) SMR CODE	(2) FEDERAL STOCK NUMBER	(3) DESCRIPTION	(4) UNIT OF MEAS	(5) QTY INC IN UNIT	(6) 30-DAY DS MAINT ALLOWANCE			(7) 30-DAY GS MAINT ALLOWANCE			(8) 1-YR ALW PER 100 EQUIP CNTGCV	(9) ILLUSTRATION	
					(a)	(b)	(c)	(a)	(b)	(c)		(a) FIGURE NO.	(b) ITEM NO.
					1-20	21-50	51-100	1-20	21-50	51-100			
GROUP 06 - ELECTRICAL SYSTEM													
0609 - LIGHTS (Fig. 1)													
P O	6220-577-3434	LIGHT: clearance, service, amber - MS35423-1 (96906)	ea	2	*	*	1	*	*	1		1	1
P O	6220-726-1916	LIGHT: clearance, service, red - MS35423-2 (96906)	ea	2	*	*	1	*	*	1		1	2
P O	6220-577-3435	LIGHT: clearance, blackout, amber - MS35424-1 (96906)	ea	2	*	*	1	*	*	1		1	3
P O	6220-727-3288	LIGHT: clearance, blackout, red - MS35424-2 (96906)	ea	2	*	*	1	*	*	1		1	4
P O	5305-984-6210	SCREW: 8-32 x 3/8 lg, hex (slot), washer face - 10611 (23379)	ea	32	*	*	1	*	*	1		1	5
P O	6220-669-5623	LIGHT: service stop, service tail, blackout tail - MS51329-1 (96906)	ea	2	*	*	1	*	*	1		1	6
P O	5306-045-1976	CAPSCREW: w/lockwasher, 3/8-16NC x 3/4 lg - 10612 (23379)	ea	4	*	*	1	*	*	1		1	7
P O	6220-846-9745	STOPLIGHT: vehicular blackout - MS51302-1 (96906)	ea	1	*	*	1	*	*	1		1	8
P O	2590-782-4257	PIN: stabilizing, electrical light system - 10613 (23379)	ea	1	*	*	1	*	*	1		1	9
P O	5306-880-9784	CAPSCREW: 5/16-24NF x 3/4 lg, w/ lockwasher - 10614 (23379)	ea	1	*	*	1	*	*	1		1	10
		CONNECTOR: receptacle, w/gasket - MS75021 (96906)	ea	1								1	14
P O	6240-019-0877	LAMP, INCANDESCENT: MS15570-1251 (96906) (Non-illustrated)	ea	8	2	5	8	2	5	8			
P O	6240-044-6914	LAMP, INCANDESCENT: MS35478-1683 (96906) (Non-illustrated)	ea	8	2	5	8	2	5	8			
0613 - CHASSIS WIRING (Fig. 1)													
P O	2590-782-4262	COVER: receptacle, Bendix - 10616 (96906)	ea	1	*	*	1	*	*	1		1	15
P O	2590-782-4261	COVER ASSY: front corners (screws & gaskets) - 10617 (23379)	ea	2	*	*	1	*	*	1		1	16
P O	2590-782-4260	COVER ASSY: main (screw & gasket) - 10618 (23379)	ea	1	*	*	1	*	*	1		1	17
P O	2590-782-4259	COVER ASSY: brake (screw & gasket) 10619 (23379)	ea	1	*	*	1	*	*	1		1	18
P O	2590-782-4258	CONNECTOR ASSY: shells, sleeve & washer 10620 (23379)	ea	4	*	*	1	*	*	1		1	19
P O	2590-772-8813	HARNESS ASSY: intervehicular - 7728813 (Non-illustrated)	ea	1	2	2	3	2	2	3			

SECTION IV - Continued

REPAIR PARTS FOR DIRECT SUPPORT, GENERAL SUPPORT AND DEPOT MAINTENANCE (MIL-M-63001 B)													
(1) SMR CODE	(2) FEDERAL STOCK NUMBER	(3) DESCRIPTION	(4) UNIT OF MEAS	(5) QTY INC IN UNIT	(6) 30-DAY DS MAINT ALLOWANCE			(7) 30-DAY GS MAINT ALLOWANCE			(8) 1-YR ALW PER 100 EQUIP CNTGCV	(9) ILLUSTRATION	
					(a)	(b)	(c)	(a)	(b)	(c)		(a) FIGURE NO.	(b) ITEM NO.
					1-20	21-50	51-100	1-20	21-50	51-100			
GROUP 11 - AXLES													
1100 - FRONT AND REAR AXLES (Fig. 4)													
P F	5305-880-9773	CAPSCREW: 1/2-20NF x 1-3/4 HT, part of wheel assy - 10231 (23379) (Group 1100)	ea	16	1	2	3	1	2	3		4	27
P F	2530-782-4270	AXLE ASSY: w/brake flange and axle spring - 10629 (23379) (Group 1100)	ea	2	*	1	1	*	1	1		4	28
GROUP 12 - BRAKES													
1201 - PARKING BRAKE LEVER AND CABLE ASSEMBLY (Fig. 2)													
P O	2530-782-4269	LEVER: manual control, hand brake - 10600 (23379)	ea	1	*	*	1	*	*	1		2	1
P O		PIN: w/flatwasher and cotter key - 10604 (23379)	ea	1	*	*	1	*	*	1		2	2
P O	2530-782-4283	SPACER: sleeve, broke cable - 10607 (23379)	ea	2	*	*	1	*	*	1		2	3
P O	5305-880-9772	CAPSCREW ASSY: 5/16-18NC x 1-5/8, w/nut & lockwasher - 10603 (23379)	ea	3	*	*	1	*	*	1		2	4
P O	2530-169-5786	PIN: w/cotter key - 10608 (23379)	ea	2	*	*	1	*	*	1		2	5
P O	2530-782-4266	CABLE ASSY: left hand brake - 10602 (23379)	ea	1	*	*	1	*	*	1		2	6
P O	2530-782-4268	CABLE ASSY: right hand brake - 10601 (23379)	ea	1	*	*	1	*	*	1		2	7
P O	2530-782-4282	CLAMP: brake cable -10606 (23379)	ea	2	*	*	1	*	*	1		2	8
P O	2530-782-4271	SPACER: sleeve, brake system - 10605 (23379)	ea	1	*	*	1	*	*	1		2	9
1202 - BRAKE ASSEMBLY (Fig. 3)													
P O	2530-782-4312	PARTS KIT: brake springs - 56214 (23379) COMPOSED OF: 2 - 44934 adjusting screw spring 4 - 45424 retractor spring	ea	1	1	1	2	1	1	2		3	1
P O	2530-782-4320	PLATE shoe guide, brake system - 46424 (23379)	ea	1	*	*	1	*	*	1		3	2
X1 O		PLATE: backing, and anchor assy - r. h. 48754 (23379)	ea	1								3	3
X1 O		PLATE: backing, and anchor assy - l. h. 48755 (23379)	ea	1								3	4
	5935-782-8661	CONNECTOR ASSY: magnet lead - 48770 (23379)	ea	1	*	*	1	*	*	1		3	5
P O	3120-880-3066	BEARING: sleeve, oilite-42680 (23379)	ea	1	1	2	3	1	2	3		3	6

SECTION IV - Continued

REPAIR PARTS FOR DIRECT SUPPORT, GENERAL SUPPORT AND DEPOT MAINTENANCE (MIL-M-63001 B)													
(1) SMR CODE	(2) FEDERAL STOCK NUMBER	(3) DESCRIPTION	(4) UNIT OF MEAS	(5) QTY INC IN UNIT	(6) 30-DAY DS MAINT ALLOWANCE			(7) 30-DAY GS MAINT ALLOWANCE			(8) 1-YR ALW PER 100 EQUIP CNTGCV	(9) ILLUSTRATION	
					(a)	(b)	(c)	(a)	(b)	(c)		(a) FIGURE NO.	(b) ITEM NO.
					1-20	21-50	51-100	1-20	21-50	51-100			
		1202 - BRAKE ASSEMBLY (Fig. 3) - Continued											
P O	2530-782-4284	COVER: brake adjusting slot- 58921 (23379)	ea	1	*	*	1	*	*	1		3	7
P O	2530-782-4277	PARTS KIT: magnet, l. h. -56277 (23379) COMPOSED OF: 1 - 48762 magnet 1 - 43747 retaining ring 1 - 46264 spring 2 - 49789 adaptor	ea	1	1	2	2	1	1	2		3	8
P O	2530-782-4276	PARTS KIT: magnet, r. h. -56222 (23379) COMPOSED OF: 1 - 48763 magnet 1 - 43747 retaining ring 1 - 46264 spring 1 - 49789 adaptor	ea	1	1	2	2	1	2	2		3	9
P O	2530-782-4313	BRAKE SHOE SET: internally actuated - 56210 (23379) COMPOSED OF: 1 - 46397 shoe & lining primary 1 - 46398 shoe & lining secondary	ea	1	2	5	8	2	5	8		3	10
P O	5305-880-9747	SCREW ASSY: adjusting, brake - 58929 (23379)	ea	1	*	*	1	*	*	1		3	11
P O	2530-782-4286	ACCESSORY KIT: brake shoe - 56266 (23379) COMPOSED OF: 2 - 30687 pin 2 - 30688 spring 4 - 30690 cup	ea	1	1	2	2	1	2	2		3	12
P O	2530-782-4279	ACTUATING ASSY: magnet and lever, l. h., 12 volt (green loom) - 48761 (23379)	ea	1	*	*	1	*	*	1		3	13
P O	2530-782-4278	ACTUATING ASSY: magnet and lever, r. h., 12 volt (green loom) - 48760 (23379)	ea	1	*	*	1	*	*	1		3	14
P O	2530-782-4273	CLAM: wire - 30847 (23379)	ea	1	*	*	1	*	*	1		3	15
P O	2590-169-5728	PLATE: armature- 30944 (23379) (Non-illustrated)	ea	1	*	*	1	*	*	1			
P O	2530-782-4267	BRAKE ASSY- r. h., 12 volt - 48960 (23379) (Non- illustrated)	ea	1	*	*	1	*	*	1			
P O	2530-782-4285	BRAKE ASSY: l. h., 12 volt- 48961 (23379) (Non-illustrated)	ea	1	*	*	1	*	*	1			
		GROUP 13 - WHEELS AND TIRES 1311 -WHEELS (Fig. 4)											
P O	5307-017-0534	STUD: wheel, component of wheel assy - 10632 (23379)	ea	24	*	*	1	*	*	1		4	
P O	5310-017-0512	WASHER: stud wheel, component of wheel assy- 10628 (23379)	ea	24	*	*	1	*	*	1		4	15

SECTION IV - Continued

REPAIR PARTS FOR DIRECT SUPPORT, GENERAL SUPPORT AND DEPOT MAINTENANCE (MIL-M-63001 B)													
(1) SMR CODE	(2) FEDERAL STOCK NUMBER	(3) DESCRIPTION	(4) UNIT OF MEAS	(5) QTY INC IN UNIT	(6) 30-DAY DS MAINT ALLOWANCE			(7) 30-DAY GS MAINT ALLOWANCE			(8) 1-YR ALW PER 100 EQUIP CNTGCV	(9) ILLUSTRATION	
					(a)	(b)	(c)	(a)	(b)	(c)		(a) FIGURE NO.	(b) ITEM NO.
					1-20	21-50	51-100	1-20	21-50	51-100			
1311 - WHEELS (Fig. 4) - Continued													
P O	5315-234-1664	PIN, COTTER: 3/16 x 1-1/2 in. wheel assy 10636 (23379) MS24665 (96906)	ea	4	*	*	1	*	*	1		4	16
P O	2530-782-4314	CAP: grease, wheel, part of wheel assy 10637 (23379)	ea	4	*	*	1	*	*	1		4	17
P O	5310-017-0508	NUT: slotted, hexagon, spindle, part of wheel assy - 10247 (23379)	ea	4	*	*	1	*	*	1		4	18
P O	5310-017-0511	WASHER: spindle, wheel, part of wheel assy - 10635 (23379)	ea	4	*	*	1	*	*	1		4	19
P O	3110-100-3541	CONE AND ROLLERS: tapered roller bearing, wheel assy - 10218 (23379)	ea	8	1	2	2	1	2	2		4	20
P O	3110-100-0544	CUP: tapered roller bearing, inner or outer, wheel assy - 10219 (23379).	ea	8	1	2	2	1	2	2		4	21
P O	2530-782-4316	LUG NUT: wheel - 10634 (23379)	ea	24	*	*	1	*	*	1		4	22
P O	2530-782-4319	WHEEL: pneumatic, tire- 10633 (23379)	ea	4	*	*	1	*	*	1		4	23
P F	2530-782-4317	HUB: w/cups and studs, brake system - 10631 (23379)	ea	4	*	*	1	*	*	1		4	24
P O	2530-782-4318	DRUM: brake - 10630(23379)	ea	4	*	*	1	*	*	1		4	25
P O	2530-782-4315	PACKING: preformed, grease retaining, part of wheel assy - 10217 (23379)	ea	4	2	3	5	2	3	5		4	26
1313 - TIRES AND TUBES (NON-ILLUSTRATED)													
P O	2640-052-0944	CAP, TIRE VALVE: MS51375-1 (96906)	ea	4	5	9	15	5	9	15			
P F	2610-294-4944	TIRE, PNEUMATIC: MS35390-1(96906)	ea	4	11	23	42	11	23	42			
P F	2610-269-7329	TUBE, INNER, PNEUMATIC TIRE: MS35392-22 (96906)	ea	4	9	18	32	9	18	32			
P F	2640-810-5861	VALVE CORE, PNEUMATIC TIRE: MS51377-1 (96906)	ea	4	5	9	15	5	9	15			
GROUP 16 - SPRINGS AND SHOCK ABSORBERS													
1601-SPRINGS (Fig. 4)													
P O	5315-234-1673	PIN: cotter, 5/16 x 3 - 10303 (23379)	ea	2	*	*	1	*	*	1		4	1
X1 O		HOUSING: pivot assembly- 10330 (23379)	ea	2								4	2
X1 O		CAPSCREW ASSY: 3/4x 10NC x 2, pivot housing- 10243 (23379)	ea	8								4	3
P O	4730-013-8105	FITTING: grease-10242 (23379)	ea	2	*	*	1	*	*	1		4	4
P O	5305-880-9763	CAPSCREW: w/lockwasher, 1/2 x 13NC x 7/8, h. t. pivot shaft-10108 (23379)	ea	4	*	*	1	*	*	1		4	5
P O	2510-782-4295	SHAFT: pivot assembly - 10304 (23379)	ea	2	*	*	1	*	*	1		4	6

SECTION IV - Continued

REPAIR PARTS FOR DIRECT SUPPORT, GENERAL SUPPORT AND DEPOT MAINTENANCE (MIL-M-63001 B)													
(1) SMR CODE	(2) FEDERAL STOCK NUMBER	(3) DESCRIPTION	(4) UNIT OF MEAS	(5) QTY INC IN UNIT	(6) 30-DAY DS MAINT ALLOWANCE			(7) 30-DAY GS MAINT ALLOWANCE			(8) 1-YR ALW PER 100 EQUIP CNTGCV	(9) ILLUSTRATION	
					(a)	(b)	(c)	(a)	(b)	(c)		(a) FIGURE NO.	(b) ITEM NO.
					1-20	21-50	51-100	1-20	21-50	51-100			
1601 - SPRINGS (Fig. 4) - Continued													
P O	5306-880-9709	U-BOLT: pivot, 3/4"- 10238 (23379)	ea	4	1	2	4	1	2	4		4	7
X1 O		SEAT: spring assy - 10239 (23379)	ea	4								4	8
P O	2510-782-4294	SPRING, ASSY: leaf- 10234 (23379)	ea	2	1	2	3	1	2	3		4	9
P O	2510-782-4296	CLIP: U-bolt, spring - 10237 (23379)	ea	4	*	*	1	*	*	1		4	10
P O	5310-019-3446	NUT: self-locking, U-bolt, 3/4-16NF 10236 (23379)	ea	8	*	*	1	*	*	1		4	11
P O	5310-017-0518	WASHER: bearing spring - 10232 (23379)	ea	16	*	*	1	*	*	1		4	12
GROUP 18- FRAME													
1812 - TRAILER ATTACHING PARTS (Fig. 5)													
P O	5306-880-9785	BOLT: 3/4-10NC x 5, hex head w/nut & washer - 10160 (23379)	ea	2	*	*	1	*	*	1		5	1
X1 O		CLEVIS ASSY: MHT - 10627 (23379)	ea	1								5	2
X1 O		HANDLE ASSY: 10177 (23379)	ea	1								5	3
P O	5315-298-1499	PIN: cotter, 1/8 x 2 - 10159 (23379)	ea	1	*	*	1	*	*	1		5	4
X1 O		FRAME: 10176 (23379)	ea	1								5	5
P O	2530-921-7308	PLATFORM LATCH ASSY: 10175 (23379)	ea	1	*	*	1	*	*	1		5	6
P O	2530-921-7306	STAND: long tongue - 10173 (23379)	ea	1	*	*	1	*	*	1		5	7
GROUP 22 - BODY, CHASSIS AND ACCESSORY ITEMS													
2202 - ACCESSORY ITEMS (Fig. 1)													
P O	9905-202-3639	REFLECTOR: indicating, clearance, amber-MS35387-2 (96906)	ea	2	*	*	1	*	*	1		1	11
P O	9905-202-2795	REFLECTOR: indicating, clearance, red - MS35387-1 (96906)	ea	4	*	*	1	*	*	1		1	12
		SCREW: 1/4-28NF x 3/8 lg, hex (slot), washer face - 10615 (23379)	ea	12								1	13
GROUP 24 - HYDRAULIC LIFT COMPONENTS													
2404 - HYDRAULIC TILT CYLINDER (Fig. 6)													
P F	2590-782-4298	CYLINDER: hydraulic assy - 10273 (23379)	ea	1	*	*	1	*	*	1		6	1
		BOLT: gland, 3/8-16NC x 1-1/4, w/nut	ea	2								6	2
P O	2590-782-4297	GLAND: hydraulic tilt cylinder - 10171 (23379)	ea	1	*	*	1	*	*	1		6	3
P O	2530-921-7239	PACKING: hydraulic tilt cylinder (include shaft dia. with order 10168 (23379)	ea	1	*	*	1	*	*	1		6	4

SECTION IV - Continued

REPAIR PARTS FOR DIRECT SUPPORT, GENERAL SUPPORT AND DEPOT MAINTENANCE (MIL-M-63001 B)													
(1) SMR CODE	(2) FEDERAL STOCK NUMBER	(3) DESCRIPTION	(4) UNIT OF MEAS	(5) QTY INC IN UNIT	(6) 30-DAY DS MAINT ALLOWANCE			(7) 30-DAY GS MAINT ALLOWANCE			(8) 1-YR ALW PER 100 EQUIP CNTGCV	(9) ILLUSTRATION	
					(a)	(b)	(c)	(a)	(b)	(c)		(a) FIGURE NO.	(b) ITEM NO.
					1-20	21-50	51-100	1-20	21-50	51-100			
		2404 - HYDRAULIC TILT CYLINDER (Fig. 6) - Continued											
P O	5306-940-3238	PLUG: filler, 1/4 NPT pipe - 10167 (23379)	ea	1								6	5
X1 O		BOLT: 1/2-13NC, 2-3/4 hex hd, w/2 nuts 10188 (23379)	ea	2	*	*	1	*	*	1		6	6
X1 O		BRACKET mounting- 10170 (23379)	ea	2								6	7
X1 O		BRACKET shaft mounting, MHT- 10638 (23379)	ea	2								6	8

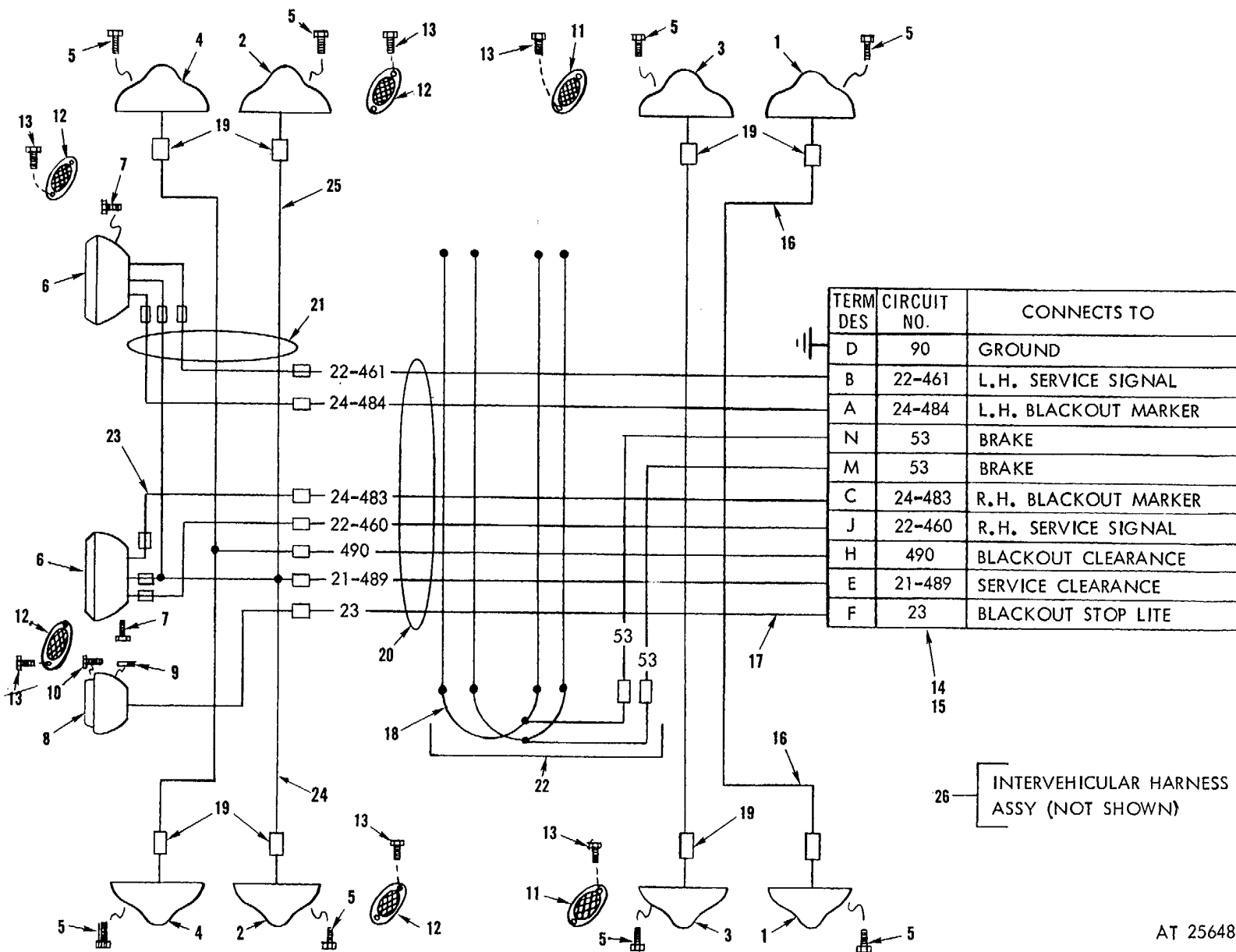
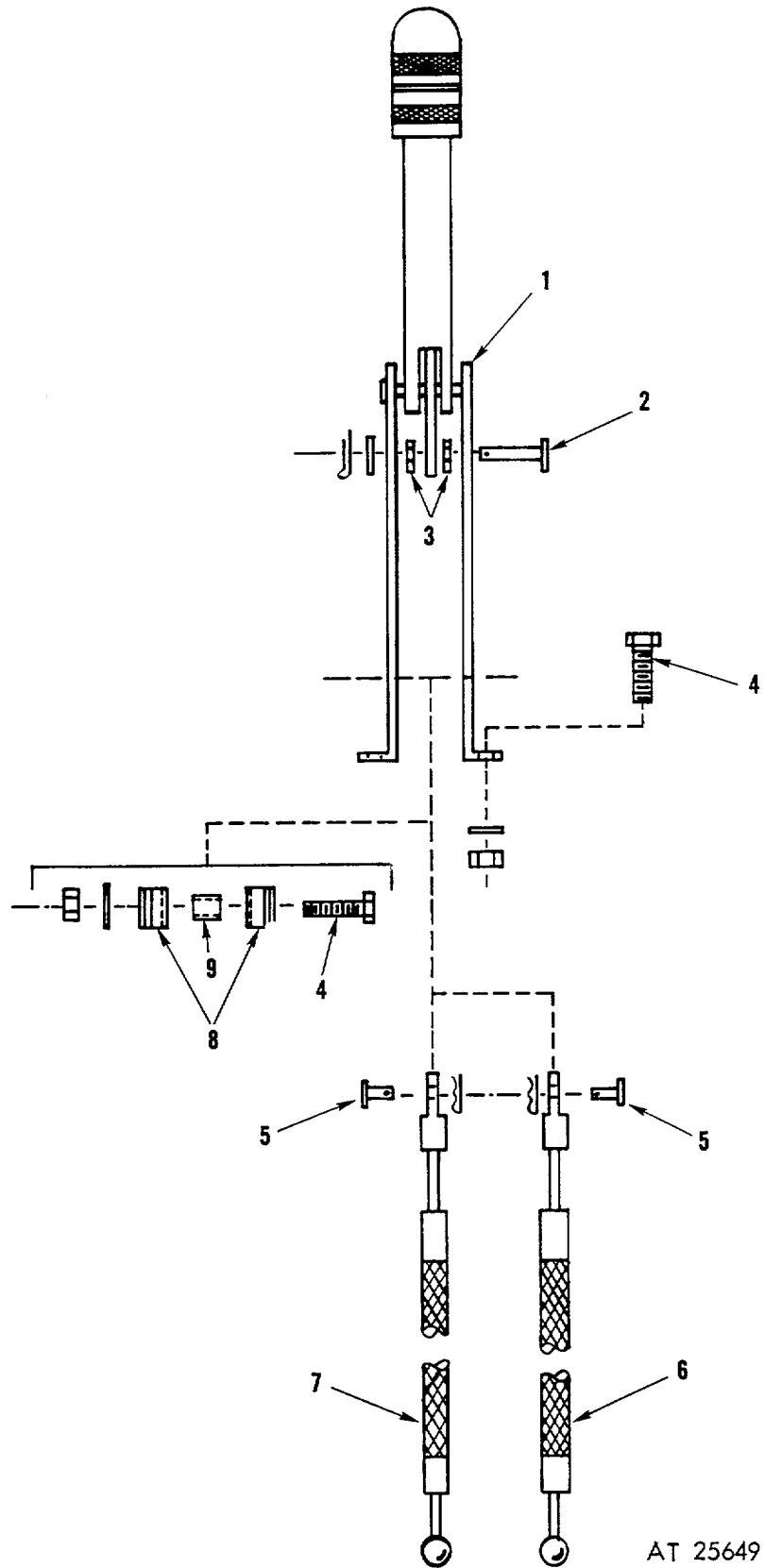
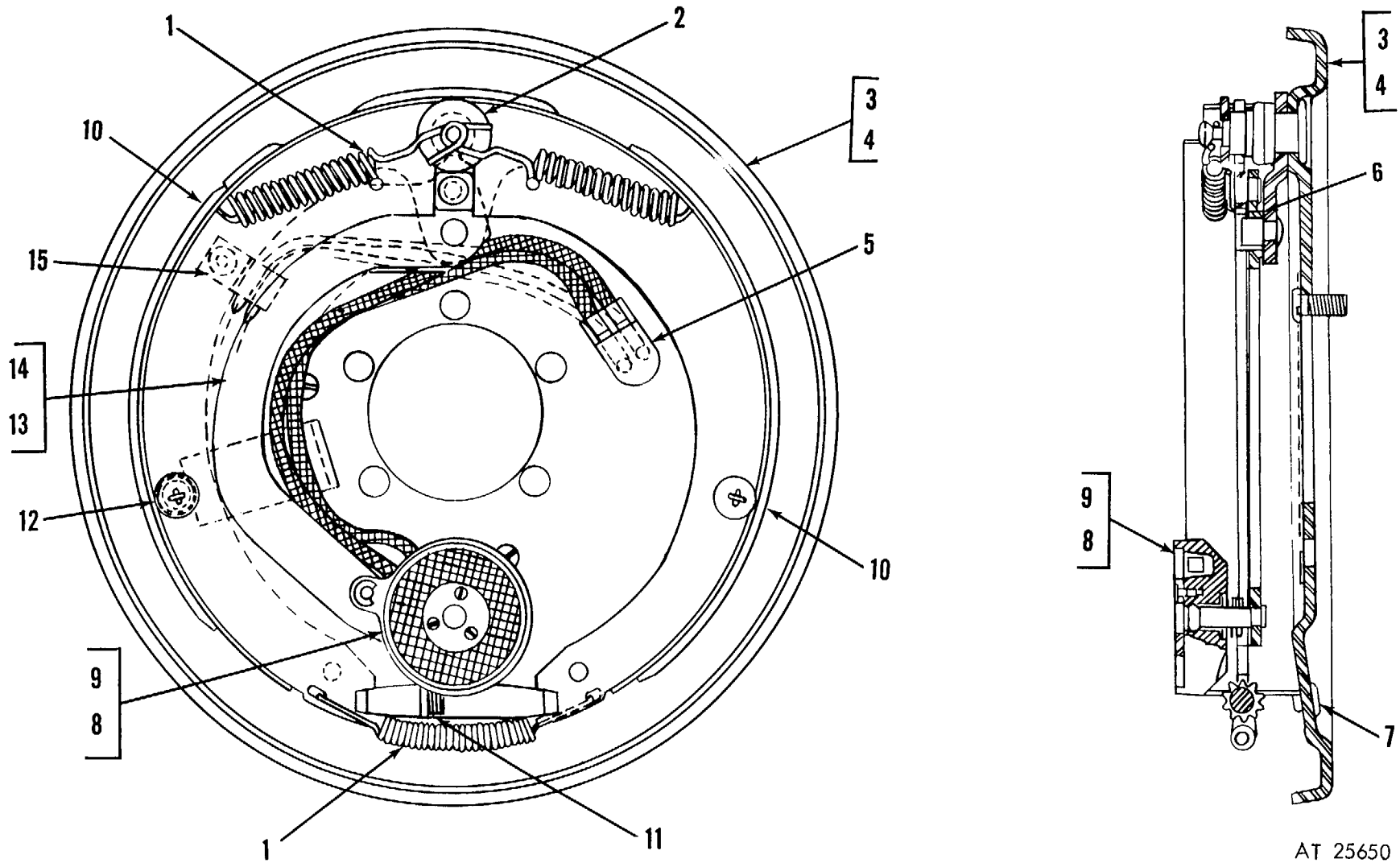


Figure 1. Electrical system.



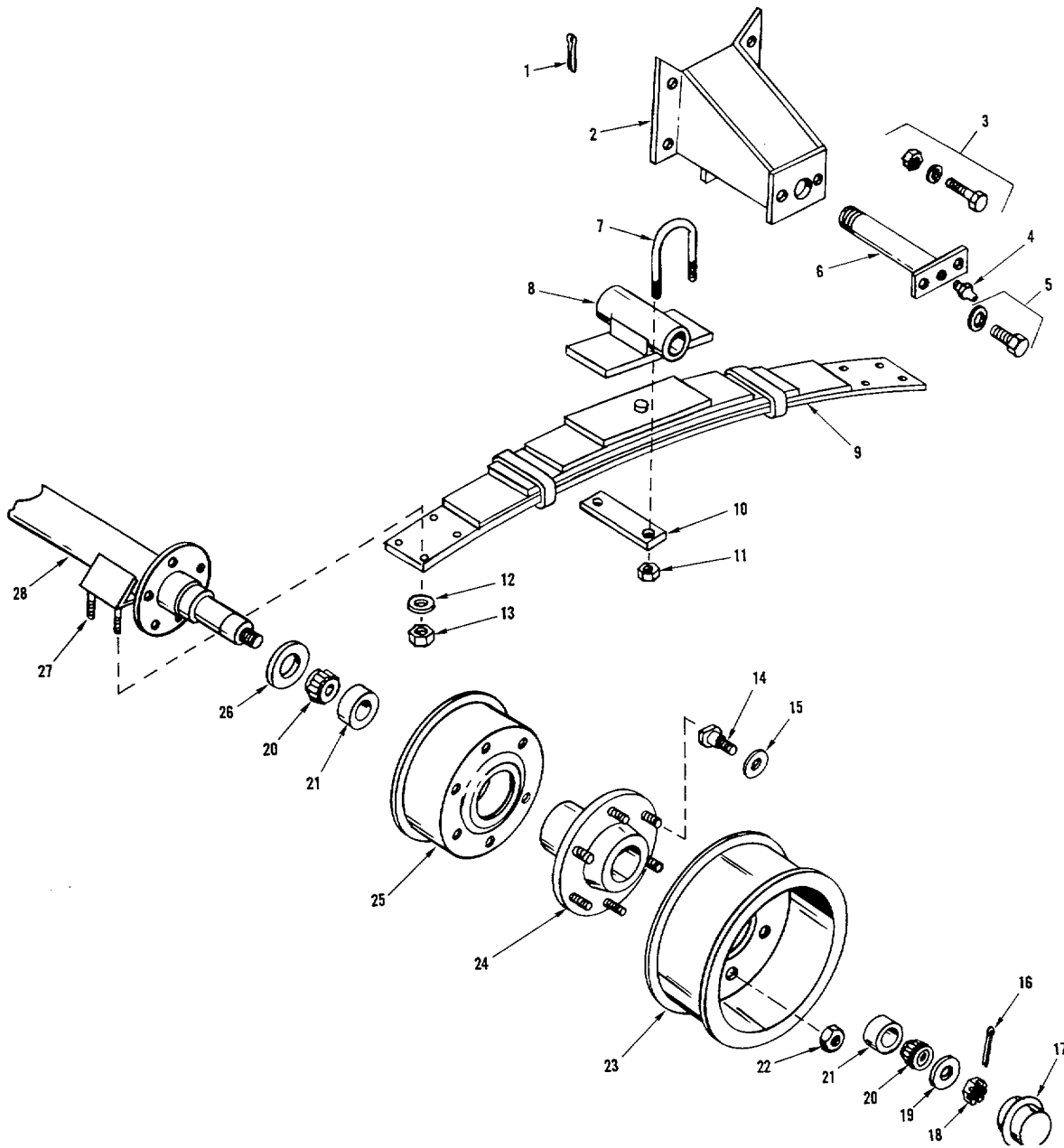
AT 25649

Figure 2. Parking brake lever and cable assembly.



AT 25650

Figure 3. Brake assembly - electrical brake (12 volt).



AT 25651

Figure 4. Suspension, wheel and axle assembly.

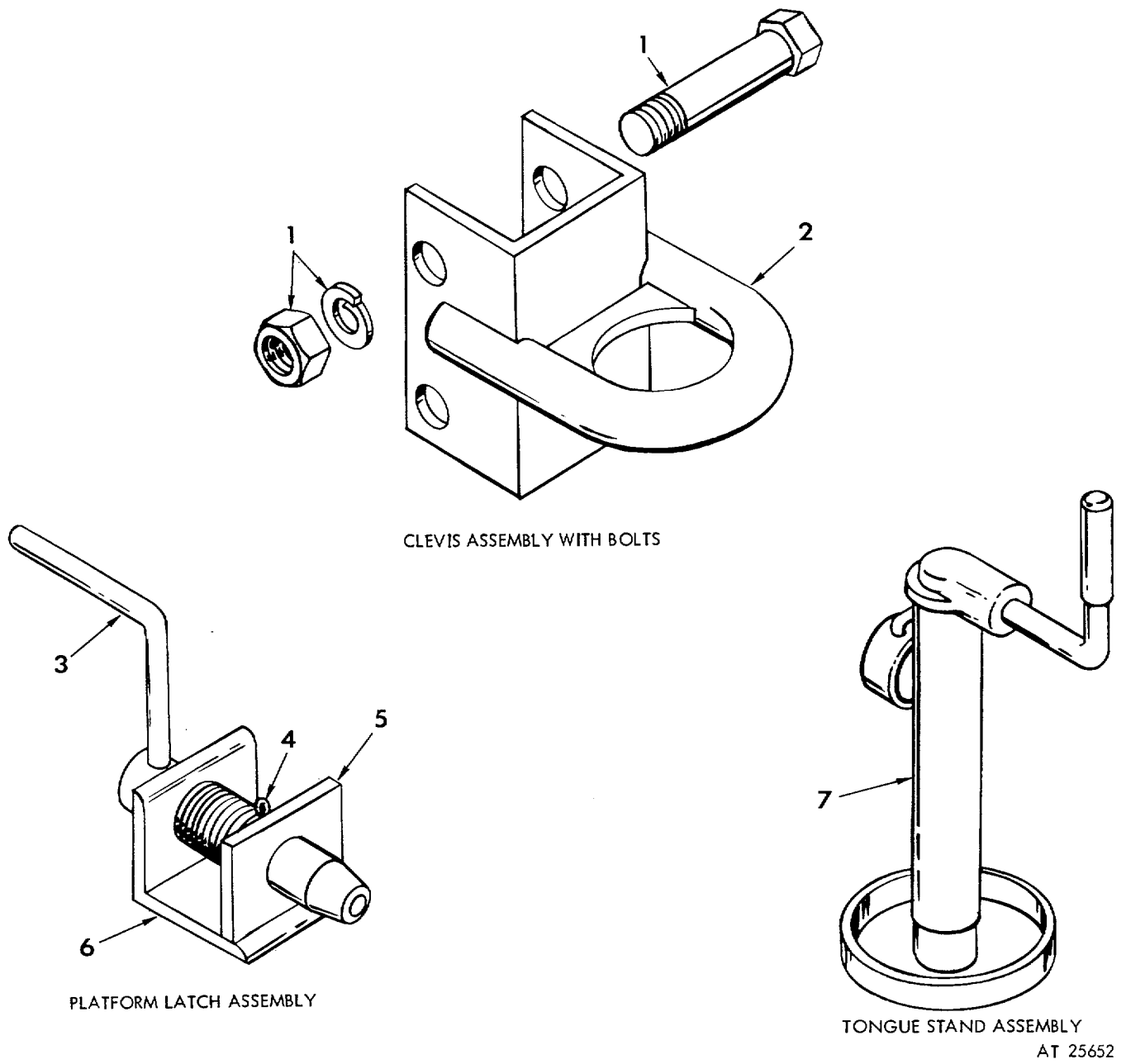
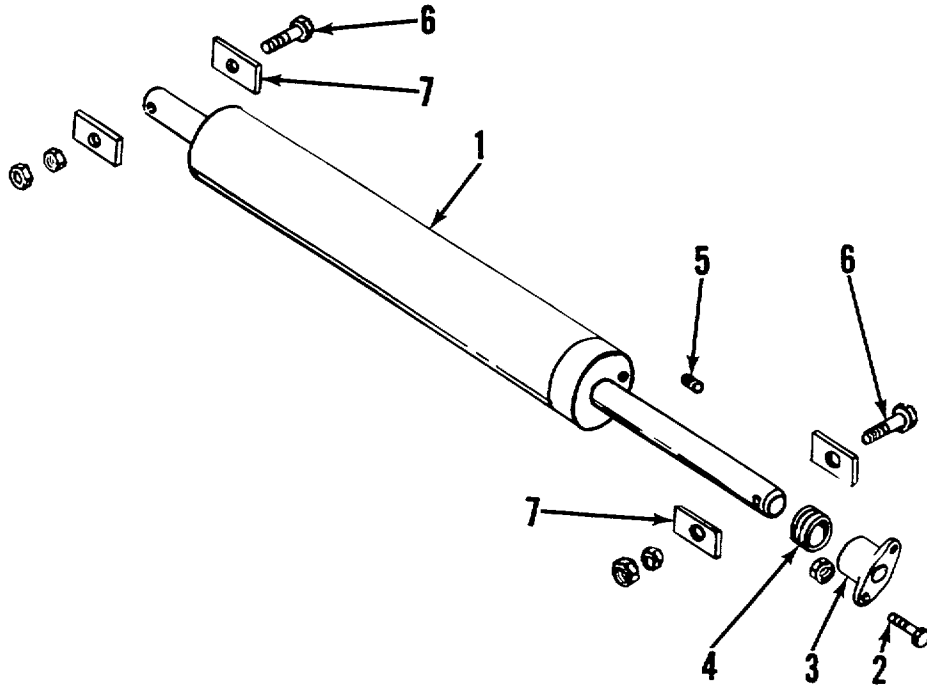


Figure 5. Trailer attaching parts assemblies.



AT 25653

Figure 6. Hydraulic tilt cylinder assembly.

Section V. INDEX

FEDERAL STOCK NUMBER CROSS-REFERENCE TO FIGURE AND ITEM NUMBER

Stock Number	Figure No.	Item No.
2510-782-4294	4	9
2510-782-4295	4	6
2510-782-4296	4	10
2530-169-5786	2	5
2530-782-4266	2	6
2530-782-4273	3	15
2530-782-4286	3	12
2530-782-4268	2	7
2530-782-4269	2	1
2530-782-4270	4	28
2530-782-4271	2	9
2530-782-4276	3	9
2530-782-4277	3	8
2530-782-4278	3	14
2530-782-4279	3	13
2530-782-4282	2	8
2530-782-4283	2	3
2530-782-4284	3	7
2530-782-4312	3	1
2530-782-4313	3	10
2530-782-4314	4	17
2530-782-4315	4	26
2530-782-4316	4	22
2530-782-4317	4	24
2530-782-4318	4	25
2530-782-4319	4	23
2530-782-4320	3	2
2530-921-7306	5	7
2530-921-7308	5	6
2590-772-8813	1	26
2590-782-4257	1	9

Stock Number	Figure No.	Item No.
2590-782-4258	1	19
2590-782-4259	1	18
2590-782-4260	1	17
2590-782-4261	1	16
2590-782-4262	1	15
2590-782-4297	6	3
2590-782-4298	6	1
3110-100-0544	4	21
3110-100-3541	4	20
3120-880-3066	3	6
4730-013-8105	4	4
5305-045-1976	1	7
5305-880-9747	3	11
5305-880-9763	4	5
5305-880-9772	2	4
5305-880-9773	4	27
5306-984-6210	1	5
5306-045-1976	1	7
5306-880-9709	4	7
5306-880-9784	1	10
5306-880-9785	5	1
5307-017-0534	4	14
5310-017-0508	4	18
5310-017-0511	4	19
5310-017-0512	4	15
5310-017-0518	4	12
5310-019-3446	4	11
5315-234-1664	4	16
5315-234-1673	4	1
5315-298-1499	5	4
5935-782-8661	3	5
6220-577-3434	1	3
6220-577-3435	1	3
6220-669-5623	1	6

Stock Number	Figure No.	Item No.
6220-726-1916	1	2
6220-727-3288	1	4
6220-846-9745	1	8
9905-202-2795	1	12
9905-202-3639	1	11

REFERENCE NUMBER CROSS-REFERENCE TO FIGURE AND ITEM NUMBER

Reference No.	Mfg. Code	Fig. No.	Item No.
MS24665	96906	4	16
MS35387-1	96906	1	12
MS35387-2	96906	1	11
MS35423-1	96906	1	1
MS35423-2	96906	1	2
MS35424-1	96906	1	3
MS35424-2	96906	1	4
MS51302-1	96906	1	8
MS51329-1	96906	1	6
MS75021	96906	1	14
30847	23379	3	15
42680	23379	3	6
46424	23379	3	2
48754	23379	3	3
48755	23379	3	4
48760	23379	3	14
48761	23379	3	13
48770	23379	3	5
56210	23379	3	10
56214	23379	3	1
56222	23379	3	9
56227	23379	3	8
56266	23379	3	12
58921	23379	3	7
58929	23379	3	11
7728813		1	26
10108	23379	4	5
10159	23379	5	4
10160	23379	5	1
10167	23379	6	5
10168	23379	6	4

Reference No.	Mfg. Code	Fig. No.	Item No.
10170	23379	6	7
10171	23379	6	3
10173	23379	5	7
10175	23379	5	6
10177	23379	5	3
10188	23379	6	6
10217	23379	4	26
10218	23379	4	20
10219	23379	4	21
10231	23379	4	27
10232	23379	4	12
10233	23379	4	13
10234	23379	4	9
10236	23379	4	11
10237	23379	4	10
10238	23379	4	7
10239	23379	4	8
10242	23379	4	4
10243	23379	4	3
10247	23379	4	18
10273	23379	6	1
10303	23379	4	1
10304	23379	4	6
10330	23379	4	2
10600	23379	2	1
10601	23379	2	7
10602	23379	2	6
10603	23379	2	4
10604	23379	2	2
10605	23379	2	9
10606	23379	2	8
10607	23379	2	3
10608	23379	2	5
10611	23379	1	5
10612	23379	1	7

Reference No.	Mfg. Code	Fig. No.	Item No.
10613	23379	1	9
10614	23379	1	10
10615	23379	1	13
10616	23379	1	15
10617	23379	1	16
10618	23379	1	17
10619	23379	1	18
10620	23379	1	19
10621	23379	1	20
10622	23379	1	21
10623	23379	1	22
10624	23379	1	23
10625	23379	1	24
10626	23379	1	25
10627	23379	5	2
10628	23379	4	15
10629	23379	4	28
10630	23379	4	25
10631	23379	4	24
10632	23379	4	14
10633	23379	4	23
10634	23379	4	22
10635	23379	4	19
10636	23379	4	16
10637	23379	4	17
10638	23379	6	8

By Order of the Secretary of the Army:

W. C. WESTMORELAND,
*General, United States Army,
Chief of Staff.*

Official:

KENNETH G. WICKHAM,
*Major General, United States Army,
The Adjutant General*

☆ U. S. GOVERNMENT PRINTING OFFICE: 1970 - 390-939/1306.

